

q_ure.ai

Improving Lung Health Outcomes

qXR - Automated Chest X-ray
AI Solution



The chest X-ray is the most commonly performed radiology exam around the world. As a non-invasive exam with easy access and low costs, chest X-rays are the first line tool for many diagnostics on the heart, lungs, blood vessels, airways and even bones of the chest and spine. While acquisition of the X-ray is done in minutes, reading and analyzing them required a specialist's eye and experience. Unfortunately, radiologist to patient ratios are low, and when available are overburdened with the high volume of incoming chest X-rays.

Qure.ai has built qXR using Artificial Intelligence (AI) to augment human expertise with the power of advanced computing. qXR uses deep learning algorithms to read and triage chest X-rays in less than 1 minute, thereby reducing the chances of late diagnoses, under diagnoses and even potential misdiagnoses to deliver better patient care.

qXR Advantage



Separate Normals
from Abnormals



Peer
reviewed

3M+

Global training
dataset



CE Class II
Certified



Report
interpretations in
< 1 minute



IT & Workflow



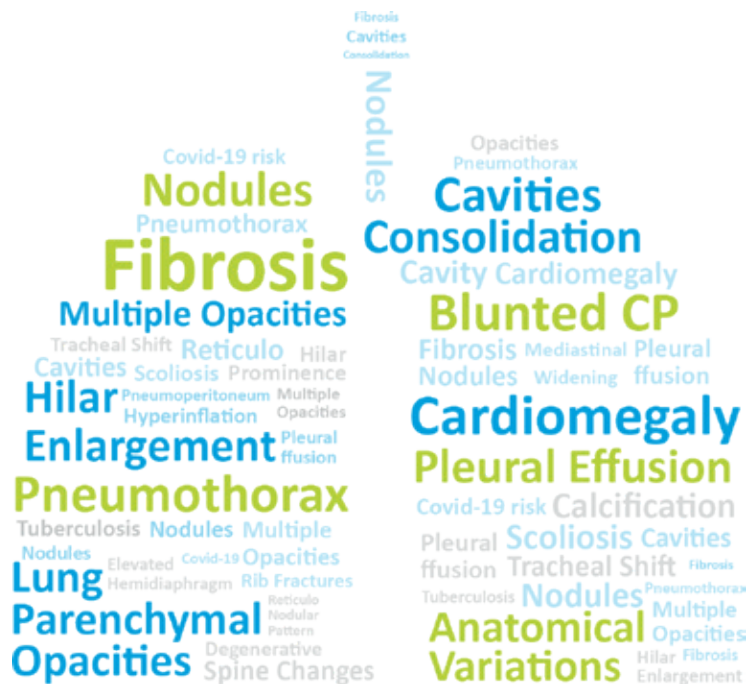
Cost
effective



HIPAA & GDPR
Compliant

qXR Capabilities

qXR has been trained to detect and localize 30 abnormalities in a chest X-ray including:



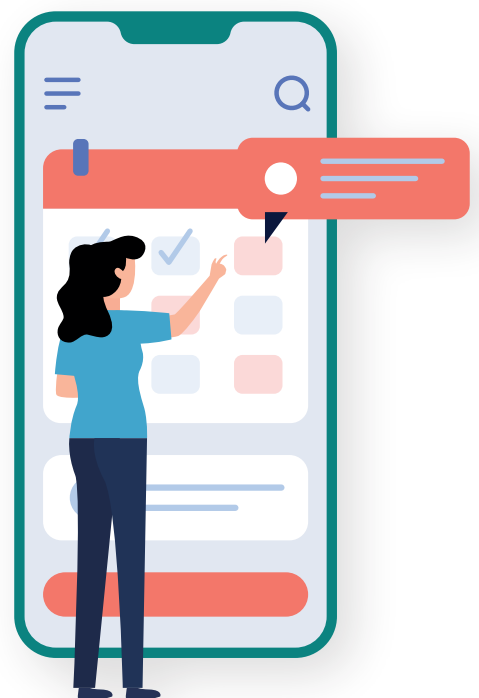
qXR Use Cases

qXR - COVID

qXR can detect ground-glass opacities and consolidation; **both indicative of COVID-19 infections.** It quantifies affected lung volume & gives healthcare workers access to critical data that can save lives on the frontlines.

Advantages

- **Calculates COVID-19 risk.** Enables triage of asymptomatic patients for RT-PCR.
- **Analyzes, tracks & interprets lesion evolution.**
- **Monitors disease progression.**
- **Automates report generation.**





qXR - TB

qXR is used as a **point-of-care screening tool** followed by a bacteriological / NAAT confirmation by **Tuberculosis programs globally**. It reduces time to diagnosis from days to a couple of hours.

Advantages

- Automates chest X-ray **interpretation**.
- Reduces the number of **follow-up microbiology tests**.
- Reduces misdiagnosis, under-diagnosis & time to treatment.
- **Dedicated mobile app/PC interface for mobile programs**.

qXR - RAD Assist

qXR has a **sensitivity and specificity equivalent to expert radiologists**. It can assist radiologists by clustering their worklists into distinct buckets of **Normal, Abnormal and To Be Reviewed**. It can also automate reporting with precise findings and quantification. It is a great aid to manage long worklists, enhance reporting speed and prioritize cases that need immediate attention.

Advantages

- Percentage **quantification** of affected area. Automates reporting to reduce reporting workload by 40%.
- **Automates reporting** of all negative cases & nearly 10% of positive cases.
- **Seamlessly integrates** with worklists across different PACS systems for reassignment & escalation.
- **Vendor agnostic integration**.

